

# CMMC 1.0

VERSUS

# CMMC 2.0



PRACTICES	ASSESSMENT	LEVELS
171	THIRD-PARTY	LEVEL 5 - ADVANCED
156	NONE	LEVEL 4 - PROACTIVE
130	THIRD-PARTY	LEVEL 3 - GOOD
72	NONE	LEVEL 2 - INTERMEDIATE
17	THIRD-PARTY	LEVEL 1 - BASIC



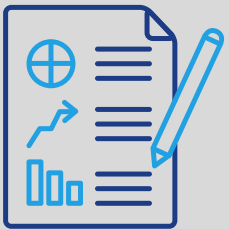
LEVELS	ASSESSMENT	PRACTICES
LEVEL 3 - EXPERT	TRIENNIAL GOVERNMENT-LED ASSESSMENTS	110+ BASED ON NIST SP 800-172
LEVEL 2 - ADVANCED	TRIENNIAL THIRD-PARTY ASSESSMENTS	110 BASED ON NIST SP 800-171
LEVEL 1 - FOUNDATIONAL	ANNUAL SELF-ASSESSMENT	17 PRACTICES

## KEY MODIFICATIONS



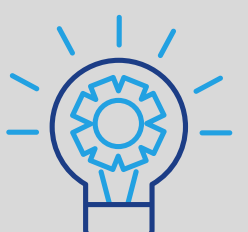
### STREAMLINED LEVELS

- CMMC 2.0 has 3 increasingly progressive levels:
  - Level 1 (Foundational) = Same as previous Level 1
  - Level 2 (Advanced) = Same as previous Level 3
  - Level 3 (Expert) = Same as previous Level 5



### ASSESSMENTS

- Self-assessments can be conducted for all companies during Level 1 and some companies during Level 2 of CMMC 2.0.



### WIDELY USED STANDARDS

- Levels 2 and 3 of CMMC 2.0 use the National Institute of Standards and Technology (NIST) cybersecurity standards.

